

# GN 279 | Pivoting connecting clamps

Aluminium



- 1
- 2
- 3
- 4
- 5
- 6
- 7
- 8
- 9
- 10
- 11
- 12
- 13
- 14
- 15
- 16
- 17
- 18

## MATERIAL

Aluminium, matte finish.  
AISI 304 stainless steel screws and nuts.

## STANDARD EXECUTIONS

- **GN 279-BL**: natural aluminium.
- **GN 279-SW**: aluminium, epoxy resin coating, RAL 9005 black colour.

## FEATURES AND APPLICATIONS

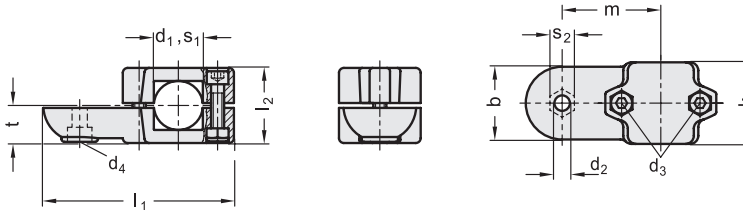
The assembly hole of GN 279 connecting clamps allows an excellent match with tubes GN 990 (see page 1954).

GN 279 connecting clamps can be assembled with connecting clamps GN 272 (see page 1928), GN 274 (see page 1930) or GN 276 (see page 1934).

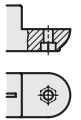
The clamping screws d3 may be replaced by clamping kits GN 911 (see page 1958).



Conversion Table	
1 mm = 0,039 inch	
d1	
mm	inch
40	1.57
42	1.65
45	1.77
48	1.89
50	1.97



GN 279-OZ



## METRIC

### GN 279-BL

Code	Description	b	d1 Hole	s1 Square hole	d2	d3	d4	k	l1	l2	m	t	s2	d3 Clamping kit	⚖️
GN.60905	GN 279-B40-OZ-2-BL	65	40	-	10.5	M10	M10	76	166.5	70	85	35	17	GN 911-M10-63	845
GN.60915	GN 279-B42-OZ-2-BL	65	42	-	10.5	M10	M10	76	166.5	70	85	35	17	GN 911-M10-63	860
GN.60925	GN 279-B45-OZ-2-BL	65	45	-	10.5	M10	M10	76	166.5	70	85	35	17	GN 911-M10-63	845
GN.60935	GN 279-B48-OZ-2-BL	65	48	-	10.5	M10	M10	76	166.5	70	85	35	17	GN 911-M10-63	800
GN.60945	GN 279-B50-OZ-2-BL	65	50	-	10.5	M10	M10	76	166.5	70	85	35	17	GN 911-M10-63	840
GN.60955	GN 279-V40-OZ-2-BL	65	-	40x40	10.5	M10	M10	76	166.5	70	85	35	17	GN 911-M10-63	860
GN.60975	GN 279-V45-OZ-2-BL	65	-	45x45	10.5	M10	M10	76	166.5	70	85	35	17	GN 911-M10-63	815
GN.60995	GN 279-V50-OZ-2-BL	65	-	50x50	10.5	M10	M10	76	166.5	70	85	35	17	GN 911-M10-63	780

### GN 279-SW

Code	Description	b	d1 Hole	s1 Square hole	d2	d3	d4	k	l1	l2	m	t	s2	d3 Clamping kit	⚖️
GN.60907	GN 279-B40-OZ-2-SW	65	40	-	10.5	M10	M10	76	166.5	70	85	35	17	GN 911-M10-63	845
GN.60917	GN 279-B42-OZ-2-SW	65	42	-	10.5	M10	M10	76	166.5	70	85	35	17	GN 911-M10-63	860
GN.60927	GN 279-B45-OZ-2-SW	65	45	-	10.5	M10	M10	76	166.5	70	85	35	17	GN 911-M10-63	845
GN.60937	GN 279-B48-OZ-2-SW	65	48	-	10.5	M10	M10	76	166.5	70	85	35	17	GN 911-M10-63	800
GN.60947	GN 279-B50-OZ-2-SW	65	50	-	10.5	M10	M10	76	166.5	70	85	35	17	GN 911-M10-63	840
GN.60957	GN 279-V40-OZ-2-SW	65	-	40x40	10.5	M10	M10	76	166.5	70	85	35	17	GN 911-M10-63	860
GN.60977	GN 279-V45-OZ-2-SW	65	-	45x45	10.5	M10	M10	76	166.5	70	85	35	17	GN 911-M10-63	815
GN.60997	GN 279-V50-OZ-2-SW	65	-	50x50	10.5	M10	M10	76	166.5	70	85	35	17	GN 911-M10-63	780

Connecting clamps